

Quality Evaluation System™*

User's Guide for Administrators

January, 2010

<http://www2.goicc.com/qes5/>

Integrated Control Corp. Fresh Technology for Good Food.™

Home | Company Info | Products | Tech Support | International | Temp Minder Login | QES Login | Wash Login | Contact Us: 1.877.ICC.8788

QES™ Login

Quality Evaluation System

Member Login

Internet Login for
Online Setup, Charts, and Graphs.

Username:

Password:

QES Monitoring Website is a paid subscription service for members who have purchased a Kitchen Minder System.

Call customer **support** at **877.ICC.8788** for help with passwords or problems accessing site or [Contact Us](#)

Home | [Company Info](#) | [Product Info](#) | [Technical Support](#) | [International](#) | [Temp Minder Login](#) | [QES Login](#) | [Wash Login](#) | [Contact Us](#)

*KITCHEN MINDER™ is a trademark of Integrated Control Corporation® and is used by permission by Burger King Corporation

Navigation Links



Manage Users – Allows the ADMIN to add and/or remove users to the organization.

Manage Alignment – This function also allows you to align your restaurants into groups and districts.

Main Page – Allows you to navigate the QES™ main page – the first page viewed after login. (See: Quality Evaluation System™ User’s Guide for more information on how to use the Main Page.)

Logout – This link will log you out of the QES™ Online System.

Updating your Profile

Your profile data is up to date.

Username: support
 Password: leave blank to leave password unchanged
 Real Name:
 eMail:
 Show Breakfast by Default:
 Business Week Starts on:

Language:

Change Group Labels

Level 0:
 Level 1:
 Level 2:
 Level 3:
 Level 4:
 Level 5:
 Level 6:
 Level 7:
 Level 8:
 Level 9:

Receive E-mail Reports?	Daily	Weekly	Monthly	Email Detail
	<input type="checkbox"/>	<input checked="" type="checkbox"/>	<input type="checkbox"/>	<input type="button" value="level8"/>

Password – Allows you to change your password to a new password from the one originally assigned to you.

Show Breakfast by Default - Select Yes or No

Business week starts on - Select the day of the week your business day begins

Language – Allows the user to change the language from English to any other supported language.

Receive E-Mail Reports? – Check when you want reports delivered daily, weekly or monthly

Email Detail Choose the level of detail on the reports as defined in the manage alignment section.

Click the “Submit” button when you have made any and/or all the changes that your organization requires.

Manage Users



Manage Users – Allows the ADMIN to add and/or remove users to the organization.

Click the “Manage User Link

The Manage User Screen

To add new users enter all of the following three (3) fields

Username: This is the name you assign a user to use to login to the QES System™. In the example above the Username is: [support](#).

Full Name: Is the name of the individual that has been assigned a Username. In the example above the Full Name is: [support](#)

Email: Is the e-mail of the user of Username and Full Name. In the example above the e-mail is: support@goicc.com.

Access Level: Select USER or ADMIN. “USER” access level does not have access to the features defined in this guide.

Active: Select Yes or No. Yes = Active User / No = no e-mail and cannot login.

You can also reset a user’s password from this page by clicking the “Reset Password” button. You can also delete a user by clicking the Delete User button.


Manage Alignment



Manage Alignment –This function also allows you to align your restaurants into groups and districts.


Click the Manage Alignment

Manage Alignment Screen



QES Online™

Home | Company Info | Products | Tech Support | International





Contact Us: 1.877.ICC.8788

Create New Group at Level: level1 New Group Name:

Edit Existing Group Name: level1 Change Name To:

Delete Group: -- To confirm deletion, type DELETE:

Note: Only empty groups can be deleted.

Current franchise alignment: (Click Level buttons below to edit alignment for that level)

level9
level8
level7
level6
level5
level4
level3
level2
level1
BK

Example of an Alignment (BK Level User Access)

By default, there is one (1) group created at each hierarchy level. In order to align your stores, you must create additional groups at each level that you need. In referring to the hierarchy, in diagram 2, three (3) additional groups must be created starting at level one (4). Do this by selecting, "Create New Group at Level:" drop down:

Diagram 1:

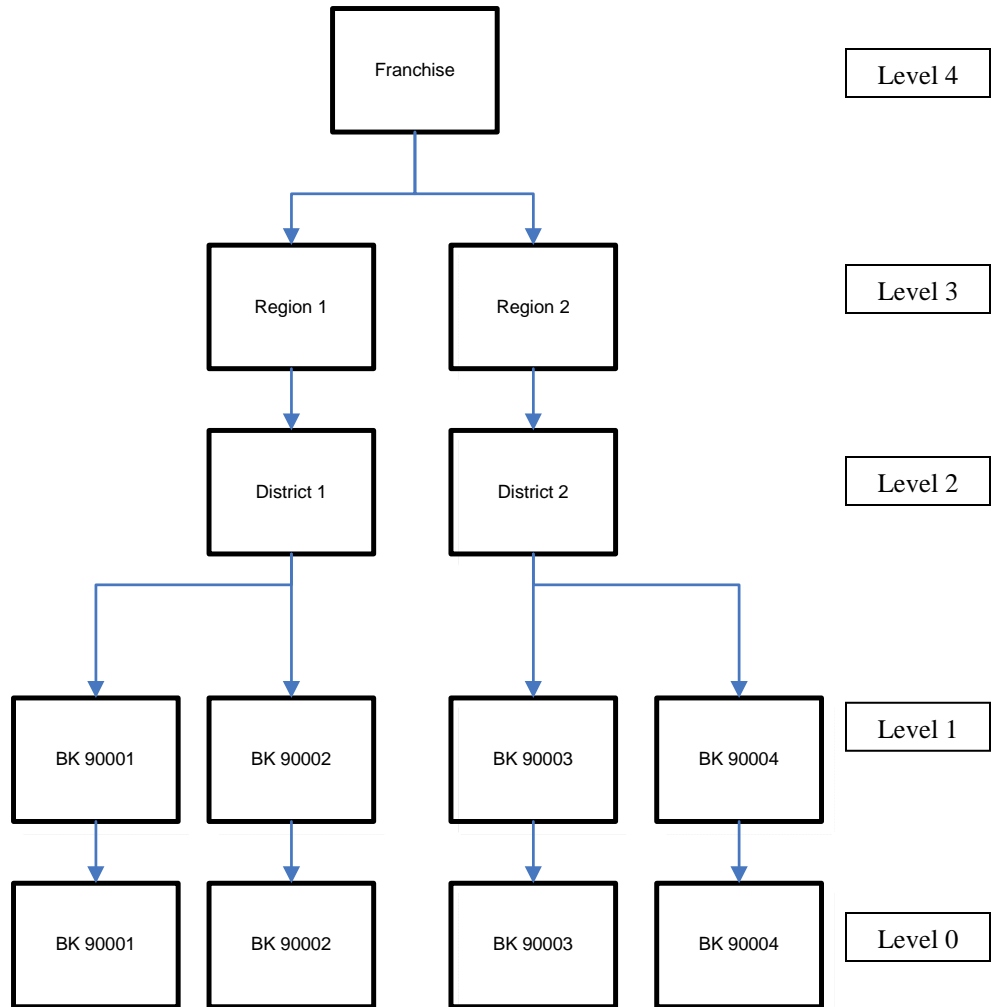
Level 4 – Franchise, Owners

Level 3 – Location of BK

Level 2 – District Managers

Level 1-BK Restaurants

Level 0 – BK Restaurants
(Cannot Change)



Adding the Burger Kings

Manage Users
Manage Alignment
Main Page
User Preferences
Show Breakfast
Show Detail
Weekly eMail
Daily Grade Graph
Weekly Grade Graph
Logout

← To align your BK click the Manage Alignment option on the menu.

The Manage Alignment Screen

Create New Group at Level: New Group Name:
 Edit Existing Group Name: Change Name To:
 Delete Group: To confirm deletion, type DELETE:
Note: Only empty groups can be deleted.

Current franchise alignment: (Click Level buttons below to edit alignment for that level)									
level9	level8	level7	level6	level5	level4	level3	level2	level1	BK
ABC Franchisee									

Adding BK Number(s) to Your Group

Select "level 1" to add BK(s) to your alignment. Enter the BK Number in the, "New Group Name" box. Click the "Create New Group" button.

Example:

Create New Group at Level: New Group Name:

Repeat for each BK that is in your franchise. In our example we will go to BK 99004.

Your Alignment Screen should look similar to this:

Create New Group at Level: New Group Name:

Edit Existing Group Name: Change Name To:

Delete Group: To confirm deletion, type DELETE:

Note: Only empty groups can be deleted.

Current franchise alignment: (Click Level buttons below to edit alignment for that level)

level9	level8	<input type="button" value="level7"/>	<input type="button" value="level6"/>	<input type="button" value="level5"/>	<input type="button" value="level4"/>	<input type="button" value="level3"/>	<input type="button" value="level2"/>	<input type="button" value="level1"/>	BK
ABC Franchisee								BK 99001	BK 99001
								BK 99002	BK 99002
								BK 99003	BK 99003
								BK 99004	BK 99004

Adding District(s) to Your Group

In the "Create New Group at Level" drop down menu select "level 2".

Create New Group at Level: New Group Name:

Enter the District Number in the, "New Group Name" box. Click the "Create New Group" button.

In the example below we create "District 1".

Example:

Create New Group at Level: New Group Name:

Repeat for each district in your franchise. In our example we have 2 districts.

Your Alignment Screen should look similar to this:

Create New Group at Level: New Group Name:

Edit Existing Group Name: Change Name To:

Delete Group: To confirm deletion, type DELETE:

Note: Only empty groups can be deleted.

Current franchise alignment: (Click Level buttons below to edit alignment for that level)									
level9	level8	level7	level6	level5	level4	level3	level2	level1	BK
ABC Franchisee							District 1	BK 99001	BK 99001
							District 2	BK 99002	BK 99002
								BK 99003	BK 99003
								BK 99004	BK 99004

Adding Region(s) to Your Group

In the "Create New Group at Level" drop down menu select "level 3".

Create New Group at Level: New Group Name:

Enter the Region Number in the, "New Group Name" box. Click the "Create New Group" button.

In the example below we create "Region 1".

Example:

Create New Group at Level: New Group Name:

Repeat for each Region in your franchise. In our example we have 2 Regions.

Your Alignment Screen should look similar to this:

Create New Group at Level:

Edit Existing Group Name:

Delete Group:

Note: Only empty groups can be deleted.

Current franchise alignment: (Click Level buttons below to edit alignment for that level)

	level9	level8	level7	level6	level5	level4	level3	level2	level1	BK
ABC Franchisee							Region 1	District 1	BK 99001	BK 99001
							Region 2	District 2	BK 99002	BK 99002
									BK 99003	BK 99003
									BK 99004	BK 99004

Align the BK to their Districts

Click the "level 1" button.

Create New Group at Level: New Group Name:

Edit Existing Group Name:

Delete Group: To confirm deletion, type DELETE:

Note: Only empty groups can be deleted.

Current franchise alignment: (Click Level buttons below to edit alignment for that level)

level9	level8	level7	level6	level5	level4	level3	level2	level1	BK
ABC Franchisee						Region 1	District 1	BK 99001	BK 99001
						Region 2	District 2	BK 99002	BK 99002
								BK 99003	BK 99003
								BK 99004	BK 99004

The Edit Alignment Screen

- Manage Users
- Manage Alignment
- Main Page
- User Preferences
- Logout



Edit alignment:

<input type="text"/>	<input type="button" value="v"/>	<input type="text"/>	<input type="button" value="v"/>
<input type="text"/>	<input type="button" value="v"/>	<input type="text"/>	<input type="button" value="v"/>
<input type="button" value="Submit Changes"/>			

Your Edit Alignment Screen should look similar to this:

- From the drop down menus select the BK Numbers that match the BK numbers on the left.
- Click the Submit Changes Button.

Your Alignment Screen should look similar to this:

Add Level1 BK to Districts

Click the "level 2" button.

Create New Group at Level: New Group Name:

Edit Existing Group Name: Change Name To:

Delete Group: To confirm deletion, type DELETE:

Note: Only empty groups can be deleted.

Current franchise alignment: (Click Level buttons below to edit alignment for that level)

level9	level8	level7	level6	level5	level4	level3	level2	level1	BK
ABC Franchisee						Region 1	District 1	BK 99001	BK 99001
							Region 2	District 2	BK 99002
								BK 99003	BK 99003
								BK 99004	BK 99004

Your Edit Alignment Screen should look similar to this:



Edit alignment:

BK 90001	<input type="text" value="District 1"/>	BK 90002	<input type="text" value="District 1"/>
BK 90003	<input type="text" value="District 2"/>	BK 90004	<input type="text" value="District 2"/>

- From the drop down menus select the Districts you want the BK numbers in.
- Click the Submit Changes Button.

Your Alignment Screen should look similar to this:

Create New Group at Level: New Group Name:

Edit Existing Group Name: Change Name To:

Delete Group: To confirm deletion, type DELETE:

Note: Only empty groups can be deleted.

Current franchise alignment: (Click Level buttons below to edit alignment for that level)

level9	level8	<input type="button" value="level7"/>	<input type="button" value="level6"/>	<input type="button" value="level5"/>	<input type="button" value="level4"/>	<input type="button" value="level3"/>	<input type="button" value="level2"/>	<input type="button" value="level1"/>	BK
ABC Franchisee						Region 1	District 1	BK 99001	BK 99001
							Region 2	BK 99002	BK 99002
						District 2	BK 99003	BK 99003	
							BK 99004	BK 99004	

Aligning Your Regions

Click the "level 3" Button.

Create New Group at Level: New Group Name:

Edit Existing Group Name: Change Name To:

Delete Group: To confirm deletion, type DELETE:

Note: Only empty groups can be deleted.

Current franchise alignment: (Click Level buttons below to edit alignment for that level)

level9	level8	<input type="button" value="level7"/>	<input type="button" value="level6"/>	<input type="button" value="level5"/>	<input type="button" value="level4"/>	<input type="button" value="level3"/>	<input type="button" value="level2"/>	<input type="button" value="level1"/>	BK
ABC Franchisee						Region 1	District 1	BK 99001	BK 99001
							Region 2	BK 99002	BK 99002
						District 2	BK 99003	BK 99003	
							BK 99004	BK 99004	

Your Edit Alignment Screen should look similar to this:

The screenshot shows the QES Online interface. On the left is a dark red navigation menu with the following items: Manage Users, Manage Alignment, Main Page, User Preferences, and Logout. The main content area has a red header with the 'Integrated Control Corp.' logo and 'QES Online' text. Below the header is a navigation bar with links: Home | Company Info | Products | Tech Support | International. The 'Edit alignment' form contains two dropdown menus: 'District 1' with 'Region 1' selected, and 'District 2' with 'Region 2' selected. A 'Submit Changes' button is located below the dropdowns.

- From the drop down menus select the Regions you want the Districts in.
- Click the Submit Changes Button.

Your Alignment Screen should look similar to this:

The screenshot shows the alignment screen. At the top, there are three sections: 'Create New Group at Level: level1' with a 'Create New Group' button; 'Edit Existing Group Name:' with a 'Change Name To:' field and an 'Edit Group Name' button; and 'Delete Group: --' with a 'Delete Group' button. Below these is a note: 'Note: Only empty groups can be deleted.' The main section is titled 'Current franchise alignment: (Click Level buttons below to edit alignment for that level)'. It features a row of buttons for levels level9 through level1, with level4 highlighted. Below the buttons is a table for 'ABC Franchisee' showing alignment for Region 1 and Region 2 across District 1 and District 2, with corresponding BK numbers (BK 99001-99004).

level9	level8	level7	level6	level5	level4	level3	level2	level1	BK
ABC Franchisee						Region 1	District 1	BK 99001	BK 99001
								BK 99002	BK 99002
						Region 2	District 2	BK 99003	BK 99003
								BK 99004	BK 99004

If you want to add Divisions / Zones / Country etc. follow the same steps as described above.

Your BK Stores are now aligned.